

DOMETIC



CUSTOM PROJECTS

ABOUT US



DOMETIC UK BLIND SYSTEMS LTD

First established as Oceanair in 1990, the current facility is located in Selsey, Chichester and was constructed in 2004, providing 40,000 square feet of space across two buildings for receiving, design, engineering, manufacturing, testing and shipping.

There are currently 108 employees tending to all aspects of business operations, including the meticulous handcrafting of interior features that rival the finest luxury finishes found in any yacht or home.

Products manufactured here fall into five main categories: Screens & Shades, Venetians, the renowned Skysol range of pleated blinds that are made with pleated or honeycomb-style fabric, Soft Furnishings and "custom" work. These are projects and one-off special orders that satisfy specific customer requests.

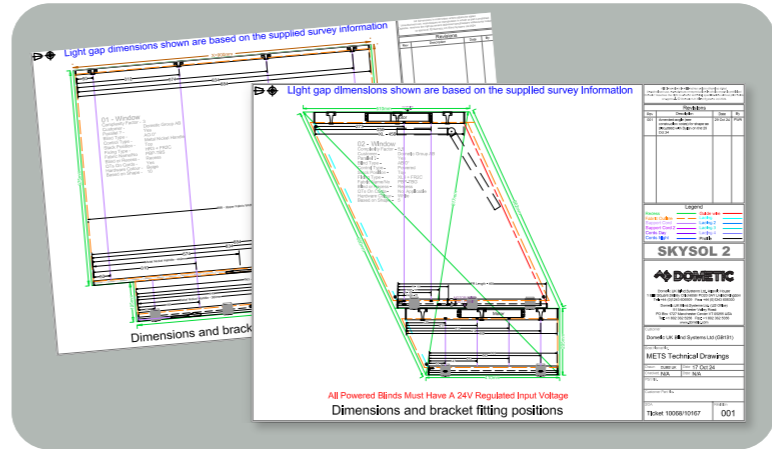


DOMETIC US BLINDS SYSTEMS

Located in the picturesque Green Mountains of Vermont in the town of Manchester Center, Dometic US Blind Systems, Ltd. began as a distributorship selling blinds manufactured in Dometic's facility in Selsey, United Kingdom. Over the years, this business has evolved into an important manufacturing facility of its own, providing a range of luxury furnishings for the marine market.

Today, this facility's experienced staff is dedicated to producing high-quality, custom soft furnishings that meet any design need. Dometic US Blind Systems uses the highest quality fabrics sourced from various mills and distributors. These fabrics are specifically selected and manufactured to complement the unique design and vision of the OEM manufacturer.



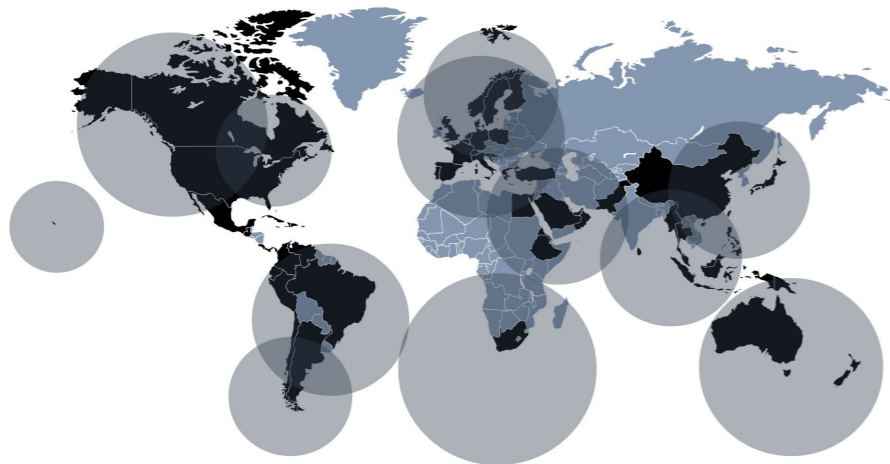


THE WORLD'S LARGEST MARINE SERVICE NETWORK

Dometic Blinds has an extensive global network of dealers and service partners across 100 countries. Whether you are out on a lake or in a larger body of water, Dometic are here to help in the event one of your products becomes faulty.

All Dometic service partners are proficiently trained and equipped with the tools and skills needed to find or fix the perfect onboard solution using existing, newly developed products or a combination of the two. In the event you have a bespoke product, our technical sales engineers will gather your specifications and design a solution that works best for you. The combination allows Dometic to offer hassle-free servicing, installations, and repairs for your Dometic appliances.

Should you require service support, please visit our Service Locator on [Dometic.com](https://www.dometic.com) to find your local service partner. Alternatively, should you have any questions or cannot find what you are looking for, please contact your local Dometic Sales Representative.



Iain Gore
General Manager



Mike Austin
Sales Director



Katelan Rastrick
Account Manager

YOUR JOURNEY, BACKED BY OUR EXPERTISE

At Dometic Blinds, our team brings extensive experience across the marine, luxury, and window covering markets. With a deep understanding of these specialised environments, we offer expert support from the very start of your project through to completion. Whether it's precise measuring and installation, tailored design advice, or working with fabrics from our curated collection, or those you provide - we're here to create the perfect onboard solution that meets your vision and performance needs.



Mike Wilterdink
Head of Sales (N.America)



Tom Richardson
Account Manager



Heather McInally
Product Manager



Aiden Devlin
Account Manager



Fred Mayer
Sales Manager (N.America)

SURVEYING &



INSTALLATION



PRECISION PERFECTED: FROM FIRST MEASURE TO FINAL FIT

At Dometic Blinds, we understand that precision is everything—especially when it comes to creating bespoke blind solutions for marine and luxury environments. That's why we have a dedicated surveying and installation team on-hand to support you every step of the way. From the moment you begin your project with us, you can expect expert attention to detail, backed by years of hands-on experience in complex and specialist settings.

As part of our tailored service, a member of our professional team will visit your chosen vessel or location to carry out a dedicated measure-up. This on-site visit ensures that every dimension is captured with complete accuracy, laying the foundation for a flawless result. Once your blinds have been made to your specifications, our team will return to carry out the installation. With a commitment to quality and a deep understanding of how to work within high-end interiors, they'll ensure your blinds are installed to the highest standard.

The result is a seamless finish that looks exceptional and functions flawlessly—crafted from precise measurements to ensure your blinds fit perfectly, enhancing your onboard space with elegance and ease.



FABRICS



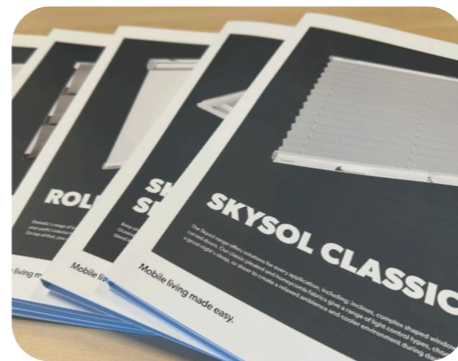
PRECISION PERFECTED: FROM FIRST MEASURE TO FINAL FIT

At Dometic, we understand that fabric is about more than just aesthetics; it plays a vital role in shaping the onboard experience. That's why we work with a wide range of fabric options to suit every project, design vision, and performance need. Whether you're looking for something from our own curated collection, a high-end designer brand, or a material you've personally selected, we ensure every fabric meets the highest standards of quality and marine suitability.

The Dometic fabric collection offers a refined selection of designs, textures, and materials—meticulously chosen to create the perfect onboard atmosphere for any setting. For bespoke requirements, we draw on our deep expertise and collaborate closely with you to craft a fabric solution tailored to your vessel. Each fabric is rigorously tested onsite to ensure its suitability and durability in the marine environment.

In addition to our in-house range, we work with leading designer fabric brands, offering you access to premium materials that combine striking aesthetics with proven performance. If a project demands an even more tailored approach, we can also work with customer-specified fabrics. Our technical team will assess every material to guarantee it meets the specific requirements for marine use, giving you complete freedom without compromise.

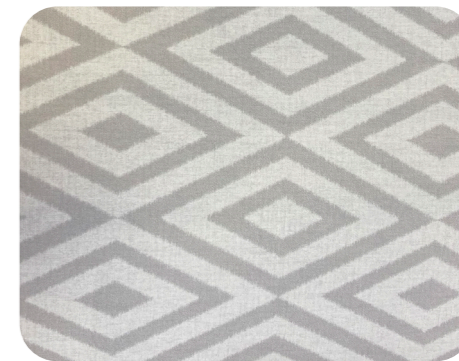
DOMETIC COLLECTION



DESIGNER



CUSTOMER SPECIFIED



OUR PRODUCTS



Pleated Blinds

Fitted into any size, inclined or shaped window, our range of pleated blinds offer a consistency in styling, effective light and temperature control.

Venetian Blinds

From warm comfort to modern styling, Dometic's wide range of slats, tapes and ladders create a pleasant environment onboard whilst preserving outside views.

Romanblinds

Add a luxurious look to your windows, whether you need a functional blackout or sheer blind, or simply a decorative accessory, Romanblind could be the perfect match for your yacht.

Roller Blinds

Available in a wide range of light and temperature regulating fabrics, our roller blinds provide excellent shading qualities and onboard privacy.

Soft Furnishings

From classic to contemporary or simply introducing a touch of home comfort onboard, with the versatility of Dometic's range of soft furnishings.

Roof & Hatch

Our roof & hatch blinds modular design accommodate any sized hatch or orientation and can be retrofitted over existing hatch trims or headlinings.





POWERED



BLINDS



EFFORTLESS CONTROL, SEAMLESS STYLE: POWERED BLIND SOLUTIONS FOR MODERN LIVING

Dometic Blinds offer a wide assortment of powered options to suit a range of applications and preferences, combining sleek design with intelligent functionality. Our systems can be operated via remote control for effortless use, or hardwired into the vessels' electrical system for a more permanent setup. We cater to global power standards, offering 12V and 24V options, a 110V motor for the US, and 230V mains solutions for European and international markets. For added convenience and efficiency, when a blind exceeds the recommended weight limit, an additional motor is automatically included, ensuring smooth and reliable operation without user intervention. Because there's no manual operation or loose cords, powered Dometic Blinds are also the ultimate child-safe option, offering peace of mind in both leisure and commercial environments.

Using powered blinds brings a host of benefits. They provide effortless control at the touch of a button, reduce physical strain, and are ideal for hard-to-reach windows. Automation options can enhance energy efficiency by regulating natural light and heat throughout the day, while the clean, cord-free design contributes to a modern and minimalist aesthetic. Whether integrated into a smart home system or operated independently, Dometic's powered blinds elevate comfort, safety, and style.



VENETIAN



BLINDS



Powered options available

Choice of tapes and ladders



65mm custom slat



50mm custom slat



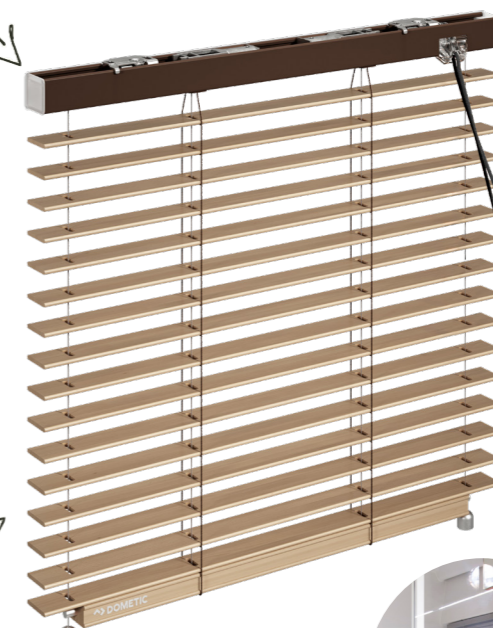
35mm custom slat



25mm slat



16mm slat



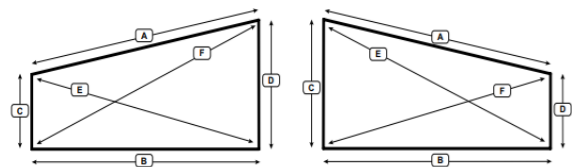
Child safe design



Side tracks and guidewires available

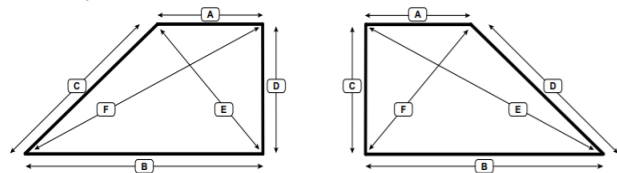
SHAPING OPTIONS

SHAPE 1

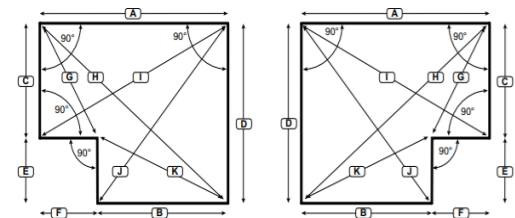


SHAPE 2

Tilt Only

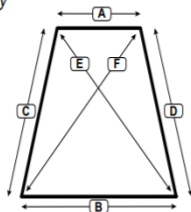


SHAPE 3

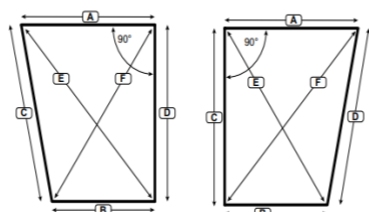


SHAPE 4

Tilt Only

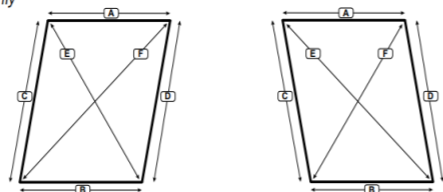


SHAPE 6



SHAPE 8

Tilt Only



VENETIAN



ALLOY



ELEVATE YOUR SPACE WITH SLEEK VENETIAN ALLOY BLINDS

Sleek, durable, and built to withstand the elements, Venetian alloy blinds are the ideal choice for marine environments. Designed with corrosion-resistant materials, these blinds offer exceptional control over light and privacy while standing up to the demands of coastal and maritime conditions. Whether on a luxury yacht or a coastal cabin, alloy Venetian blinds combine modern elegance with rugged functionality, ensuring your windows stay stylish and practical, even in the harshest marine climates.

- With a choice of 16mm, 25 mm or 50 mm slats
- Curved slats offer added strength and ensure small stack height
- Range of standard colours available
- Simple shaping available
- Various child-safe manual control options
- Available with powered operation



VENETIAN



WOOD



BRING WARMTH AND STYLE WITH VENETIAN WOOD BLINDS

Warm, natural, and timelessly elegant, Venetian wood blinds bring a refined touch to any marine interior. Crafted from high-quality, moisture-resistant timber, they're designed to withstand life at sea while adding warmth and texture to your onboard space. Whether you're outfitting a luxury yacht or a classic cruiser, these blinds offer both style and practicality, delivering excellent light control, privacy, and a sophisticated finish that complements the beauty of life on the water.

- With a choice of standard or custom slats
- Range of standard colours available
- Simple shaping available
- Various child-safe manual control options
- Available with guide wires or sidetracks to ensure taut blinds
- Available with powered operation

25mm
wood slat

35mm
wood slat

50mm
wood slat

Custom
sizes available



VENETIAN



LEATHER



SET SAIL IN STYLE WITH VENETIAN LEATHER BLINDS

Bring luxurious style and durability to your space with Venetian leather blinds. Crafted from high-quality, marine-grade leather, these blinds combine elegance with resilience, making them the perfect choice for yachts, and coastal retreats. With their sophisticated finish and exceptional ability to control light and privacy, Venetian leather blinds enhance the aesthetic of any vessel while withstanding the rigors of the marine environment. Elevate your onboard experience with a refined, long-lasting solution that exudes both comfort and style.

- Handmade in Great Britain
- With a choice of 50 mm alloy slats / 35 mm or 50 mm wooden slats
- Select from faux or real leather fabrics
- Range of standard colours available or customise with any RAL colour
- Available with guide wires or sidetracks
- Available with powered operation

ALLOY SUBSTRATE



50mm
Stitching on outside of slat, 4 sides



65mm
Stitching on outside of slat, 4 sides



Custom sizes available

WOOD SUBSTRATE



35mm
wood slat



50mm
wood slat



Custom sizes available



SKYVIEW



ENJOY LIGHT YOUR WAY WITH SKYVIEW BLINDS

Skyview offers the functionality and tilt control of a Venetian blind with the simplicity of a roller blind. The blind can be completely stowed out of sight onto a single roller. When deployed, it ensures privacy and heat protection. The open tilt allows for perfect views and light control. Whether you're cruising at sea or relaxing onboard, this innovative solution enhances comfort while complementing the aesthetics of your interior.

- Open tilt for perfect views
- Closed tilt for privacy and light control
- Powered operation available with 12 V DC, 24 V DC, or mains motors
- Handheld remote, wall switch (not supplied), or integration into the control system
- Available with guide wire control for more secure deployment
- Soft, subtle finish with a contemporary style

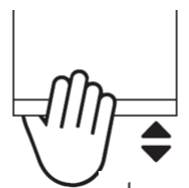
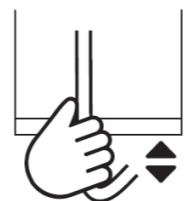


ROLLERBLINDS



Powered options available

Choice of fabric and hardware colours



Choice of operating methods



Child safe design

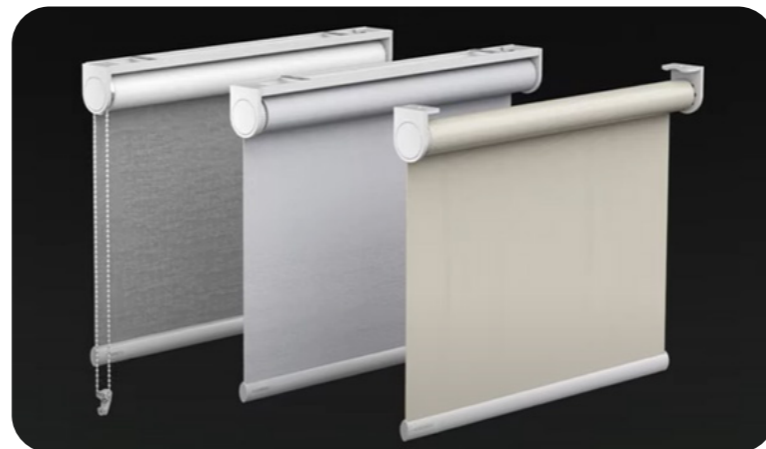
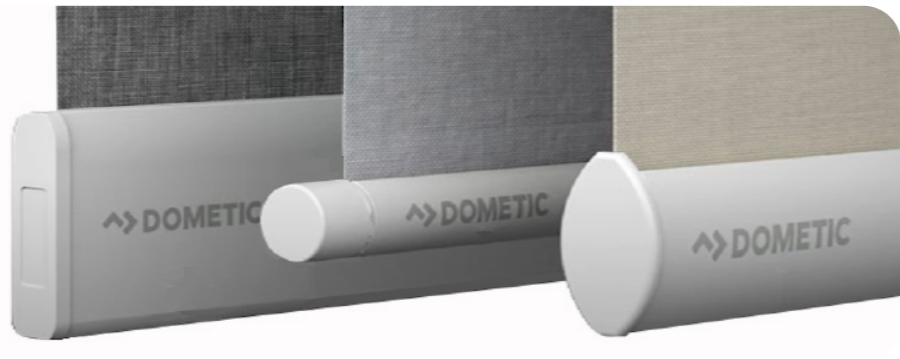


Side tracks and guidewires available

EFFORTLESS ELEGANCE: A VERSATILE ROLLERBLIND RANGE FOR EVERY SPACE

The Dometic Oceanair Rollerblind platform offers a versatile and stylish shading solution designed to meet the needs of any interior space, from luxury yachts to high-end residential settings. This comprehensive range includes manually operated blinds for simple, intuitive control, powered options for effortless convenience at the touch of a button, and the innovative PrecisionRise system—an elegant cordless design that allows smooth, precise adjustment with a single hand.

- Broad range of sheer, dimout, and blackout blinds
- Optional side tracks and guide wires hold the blind in place, ideal for angled apertures or if used in any moving vehicle
- Powered and manual options available, complemented by a range of control mechanisms and accessories
- Mounted profile and cassette options for easy installation
- Various hem bar styles available



ROMANBLINDS



Powered options available

Matching valence option



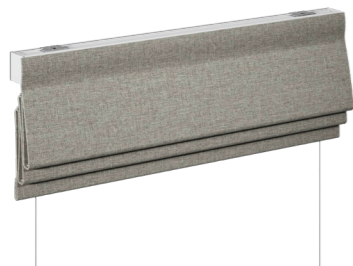
Decorative trims can be sourced. Panelling and borders are also available



Child safe design



Side tracks and guidewires available



Gradient Hard

Stepped pleats when stowed with a crisp and contemporary finish.



Gradient Soft

Stepped pleats when stowed with a casual, soft finish.



Hobble

Our wave style pleat gives depth and movement to the blind even when deployed (as shown).



Standard Hard

Equal pleats when stowed with a crisp and contemporary finish.



Standard Soft

Equal pleats when stowed, with a casual, soft finish.



Sheer Roman

Sheer fabrics are used with clear rods and tapes for a delicate finish.

MADE TO MEASURE, MADE FOR YOU

The Dometic Oceanair Romanblind collection combines timeless elegance with modern functionality, offering a refined shading solution for any interior. Designed with versatility in mind, the range includes both manually operated and powered systems, each crafted to deliver smooth, graceful movement and a tailored finish. With a selection of luxurious fabrics and customisable design options, these blinds provide not only superior light control and privacy but also a sophisticated aesthetic that enhances your interior.

- Ideal for multiple blinds in one recess
- Child safe design gives peace of mind
- Interlining available for extra warmth and a luxurious touch
- Available with guide wires and side tracks
- Powered operation available with 12 V DC, 24 V DC or mains motors
- Hand held remote, wall switch or integration into the control system



CURTAINS



EFFORTLESS ELEGANCE FOR EVERY VOYAGE

The Dometic Oceanair Curtain range offers a refined, customisable shading solution designed specifically for the unique demands of marine interiors. Available in manual or powered configurations, with bespoke tracking systems to suit complex window shapes, these curtains combine smooth operation with elegant style. Choose from a wide selection of luxurious fabrics and finishes to create a tailored look that enhances comfort and privacy on board.

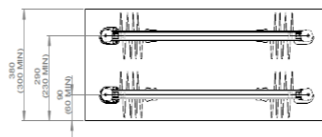
- Sheer, privacy, blackout, thermal and fire retardant fabrics options available
- Powered operation available with 24 V DC or mains motors
- Choice of linings and interlinings, plus fire retardancy on request
- Hand held remote or integration into the control system
- Custom track bending service, ideal for curved surfaces
- Attention to detail with optional hand-stitched finish
- Specialist team on hand to make the selection, ordering and installation process effortless



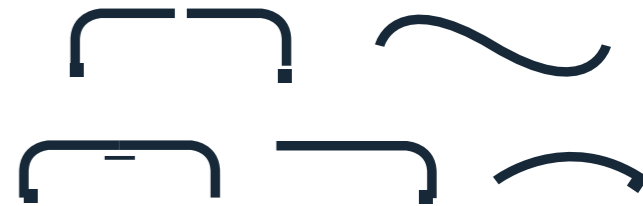
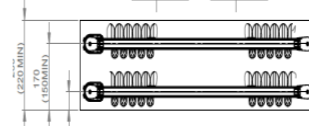
STANDARD & SHAPED TRACKS

We offer standard sized and shaped tracks. Alternatively, our tracks can be custom shaped to fit your requirements.

Minimum clearance for Wave/Ripple Pleat - single track



Minimum clearance for pinch pleat - single track





Pencil Pleat
For a fuller look.



Pinch Pleat
A classic, timeless style.



Triple Pinch Pleat
Elaborate pleats give an elegant finish.



Plaited



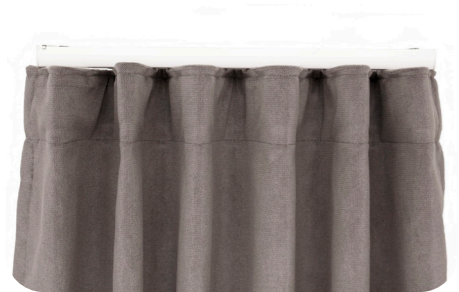
Crescent



Band



Chevron



Ripple Pleat
A contemporary style.



Eyelets
Modern in finish.



Cartridge Pleat
For a permanent wave effect.



Custom
Passementerie



Tassels



Hold Backs

CUSHIONS



YOUR PERSONAL TOUCH OF COMFORT, WHEREVER YOU MOOR

The Dometic Oceanair Cushion range brings comfort, style, and durability together in a collection designed specifically for life on the water. Expertly crafted using premium materials, these cushions are built to withstand the rigours of the marine environment while maintaining their shape and finish. With a wide choice of fabrics, colours, and custom shapes, each cushion is tailored to complement your interior or exterior space—delivering a personalised touch of luxury and relaxation, whether you're at sea or anchored in the marina.

- Bespoke product with a large choice of styles, sizes and designs
- Custom embroidery available on request
- Choice of luxury fillings; duck down, feather pads, polyester or custom specified
- We work with customer requested fabric to match existing interiors or utilise our inhouse selection
- Designed for either interior or exterior needs
- Colour contrast border options



CUSHION FILLINGS & STYLE CHOICES



Down & Feather

- Malleable
- Holds shape well
- Good support
- Lightweight & soft
- Durable
- Long-lasting



Feather

- Lightweight & soft
- Malleable
- More cost effective than down
- Can be prone to flattening over time



Polyester

- Lightweight
- Easy to clean
- Very cost effective
- Non-allergenic
- Short life span due to clumping



Foam

- Firm
- Minimal maintenance required
- Resilient
- Softens with age



Oxford



Piped



Envelope



Circle



Harlequin



Trim



Standard & custom options available

Select from a wide range of sizes, styles and colours to create the ideal onboard environment.



Embroidery

Personalise with matching or contrasting colour embroidery.



Invisible zip

Our cushions are finished with invisible zips for a seamless finish.



Contrast piping

Piping adds a luxury feel to the cushion, add a bold statement with contrast piping.



Mitred corners

Exquisitely tailored corners, perfectly matched.



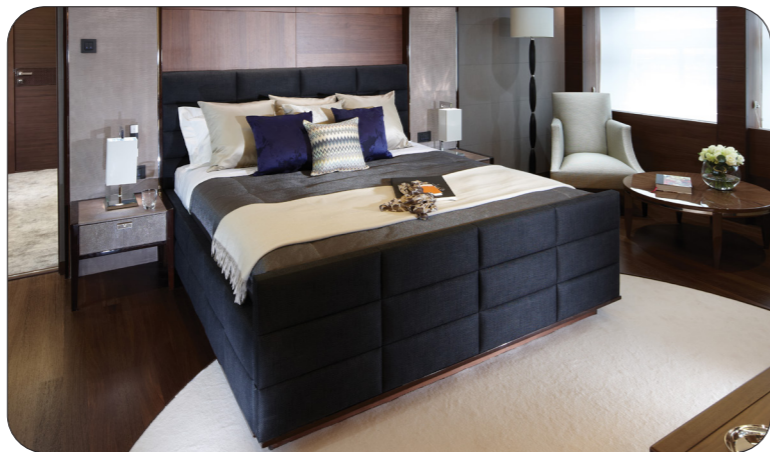
Trimming

Trim finishes for your cushions for added elegance.

BEDSPREADS



& SHEETS



SEAMLESS STYLE, WHEREVER YOU SAIL

Discover the perfect blend of luxury and practicality with Dometic Oceanair Bedspreads and Sheets. Expertly designed for life on the water, our bedding collections are tailored to fit the unique shapes and sizes of marine beds, ensuring a flawless fit and a refined finish. With premium fabrics, stylish detailing, and a focus on comfort, every element is crafted to enhance your onboard experience—turning rest into a retreat, no matter where the journey takes you.

Bedspreads and Throws

- Wide range of quality fabrics to compliment any interior
- Ability to work with customer supplied fabrics
- Dometic Blind's fabric buyers are on hand to source a fabric of your choice
- Custom made to cater for mattresses of all shapes and sizes
- Free design consultancy to coordinate fabrics with existing interior and furnishings

Luxury Sheeting

- Made from the finest premium linens; 65% cotton and 35% polyester for the optimum balance in durability and comfort
- Personalisation with in-house embroidery service
- Set includes a fitted sheet, flat sheet and two pillow cases
- Caters for mattresses of all shapes and sizes
- Colour coordinated threads
- Effortless ordering process



THROWOVER



Hospital



Rounded Fan

QUILTED



Continuous Border



Box Kicks

RUNNERS

- Custom made
- Co-ordinate with cushions & bedspread or opt for contrasting colours/patterns



FINISHES



Plain



Piped



Quilted

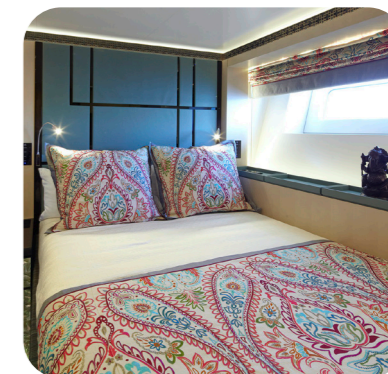


Flat

STYLES



Contrast



Co-ordinated

ATLANTIC



TOWELS



SOFTNESS YOU CAN FEEL. QUALITY YOU CAN TRUST

The Dometic Oceanair Towel is designed with the modern voyager in mind—offering luxurious softness, superior absorbency, and quick-drying performance for life on the move. Whether stepping off the deck or out of the shower, our towels deliver spa-like comfort with every use. Thoughtfully crafted from premium materials and finished with a contemporary edge, they're the perfect blend of function, style, and indulgence.

Bedspreads and Throws

- Embroidery service available
- Quick drying properties are ideal for on-board usage
- Lengthened low twist, stable spun fibre loops offer durability, reduced drying times and lasting colour
- Tested for absorbency, shrinkage, colour fastness and shedding
- 100% premium cotton



SKYSOL



CLASSIC



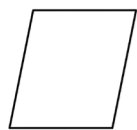
PLEATED BLINDS FOR WINDOWS OF ANY SHAPE OR INCLINE

The Dometic Oceanair Skysol Classic brings refined comfort and intelligent design to your onboard experience. Crafted for discerning travelers, this pleated blind system combines timeless aesthetics with smooth, reliable performance—perfectly suited to motorhomes, yachts, and luxury conversions. Whether you're seeking privacy, sun protection, or simply a touch of understated style, the Skysol Classic delivers a seamless blend of function and sophistication that enhances every journey.

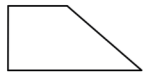
- Retains heat in colder climates or blocks excessive heat in hot climates
- Powered operation available with 12 V DC, 24 VDC or mains motors. Hand held remote, wall switch or integration into the control system
- Low profile head rail for discrete look
- Available with white, beige or black hardware to suit yacht interior
- Range of 20mm pleated fabrics in sheer, privacy and blackout types.
- 16 shapes suitable for any window type
- Honeycomb fabric option available
- Suitable for inclines of any angle



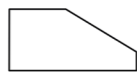
SHAPING OPTIONS



Shape 01



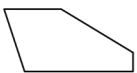
Shape 02



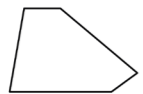
Shape 03



Shape 04



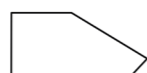
Shape 05



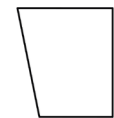
Shape 06



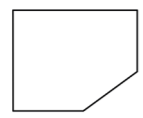
Shape 07



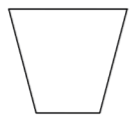
Shape 08



Shape 09



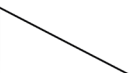
Shape 10



Shape 11



Shape 12



Shape 13



Shape 14



Shape 15

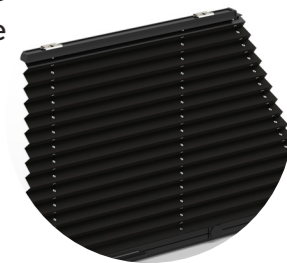


Shape 16



Powered options available

Different hardware options available



Pleated or Honeycomb fabrics available



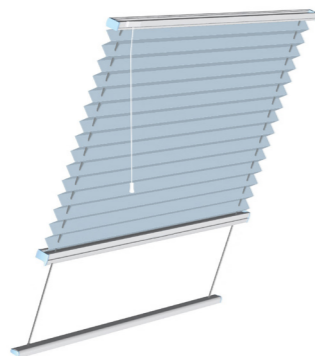
Child safe design



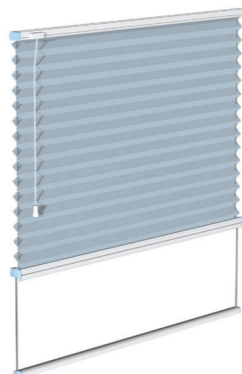
Side tracks and guidewires available



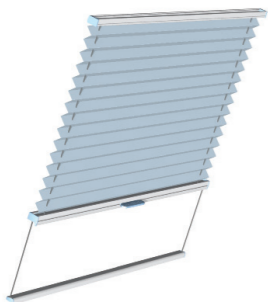
Type AO



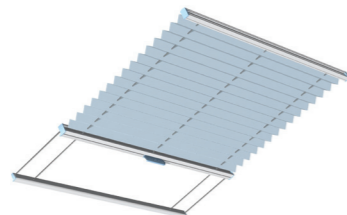
Type AO-DB



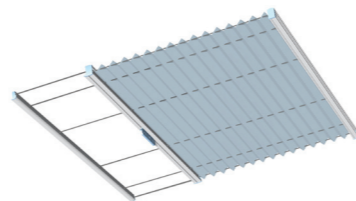
Type AO-DBE



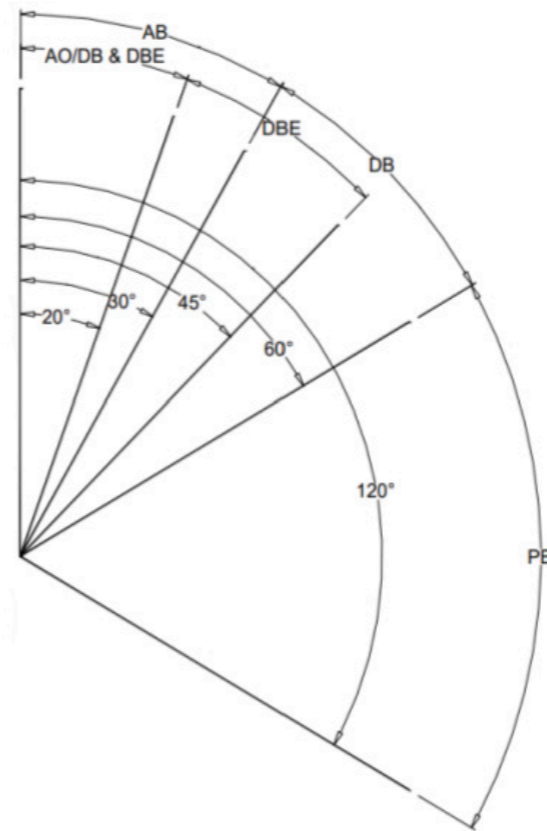
Type AB



Type DB



Type PB

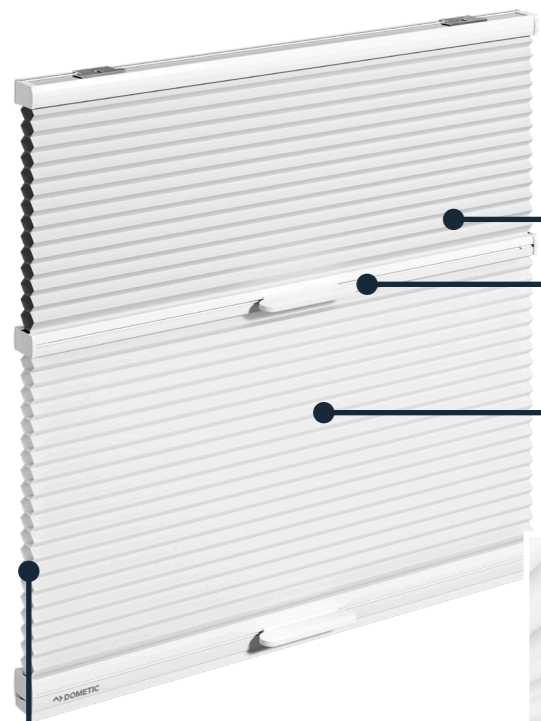


Using the Dometic Oceanair Skysol Day/Night system and other Dometic blinds solutions, we're able to accommodate a wide assortment of angles and inclines, ensuring seamless integration into even the most uniquely shaped windows. Whether it's a sloping cabin ceiling, curved panel, or irregular aperture, these versatile blinds are designed with precision engineering to deliver smooth operation and a tailored fit. This adaptability makes them ideal for marine, RV, and specialist vehicle applications where standard window coverings fall short, combining both functionality and style across a variety of interior geometries.



SKYSOL DAY / NIGHT

Hardware & hold down colour options



SKYSOL Honeycomb night fabric



Moving rails control each fabric independently



SKYSOL Classic day fabric

Optional guide wire for blind stability

EFFORTLESS LIGHT CONTROL, DAY OR NIGHT

The Dometic Oceanair Day / Night Blind is a sleek and versatile window covering designed to offer complete control over both privacy and lighting in any marine or RV interior. Featuring a dual-layer system—one fabric for softly filtered daylight and another for full nighttime blackout—it seamlessly adapts to your needs from sunrise to sunset. Whether you're enjoying the view, seeking shade, or settling in for a restful night, this blind delivers style, comfort, and practicality in one smart solution.

- Suitable for slim recesses and inclines
- Powered operation available for effortless control (12/24 V DC)
- Hand held remote, wall switch or integration into the control system
- Choice of manual control options
- Choice of fabric types and colours
- Available with white, beige or black hardware



SKYSOL



ROOFBLINDS



CRAFTED FOR CURVES, BUILT FOR COMFORT

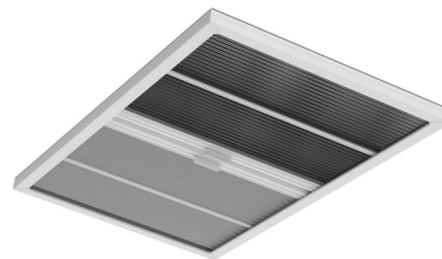
The Dometic Skysol Manual and Powered Roofblinds offer the ultimate in bespoke shading solutions for overhead glazing. Whether you're relaxing beneath the stars or seeking shelter from the midday sun, these elegantly engineered roofblinds provide smooth, reliable operation—manual or powered—crafted to fit your space perfectly. With custom shapes and sizes available, they are ideal for luxury marine environments where style, performance, and a flawless finish are essential.

Skysol Manual Roofblind

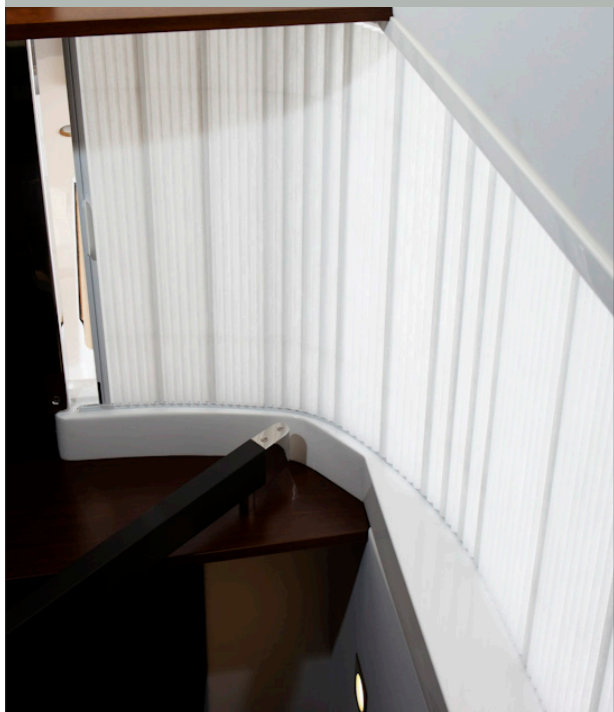
- Ideal for larger windows and sunroofs
- Integrated within pre-assembled frame for simple installation
- Dual fabric capability for multiple shading function
- No visible guidewires when the blind is stowed
- Robust moving rail, suitable for larger apertures
- Integrates perfectly with marine fixed or sliding sunroofs
- Suitable for curved or straight track applications

Skysol Powered Roofblind

- Innovative belt-drive system for more reliable operation
- Integrate into the headlining for seamless results
- Powered operation available with 12 V DC and 24 V DC motors
- Hand held remote, wall switch or control system integration
- Privacy, blackout, or flyscreen fabrics available
- Can be tailored to a variety of different apertures



SKYSOL



TRACK



STREAMLINED STYLE, SEAMLESS CONTROL

The Dometic Oceanair Skysol Track Small and Large systems bring smooth, linear motion to your window shading—perfectly tailored to fit both compact and expansive spaces. Whether you're outfitting a sleek yacht interior or a luxury vehicle, these track-guided blinds deliver reliable performance with a contemporary finish. With options to suit both subtle window recesses and panoramic openings, Skysol Track offers elegant light control designed around your space, your style, and your journey.

Skysol Track Small

- Dual fabric option available to combine privacy and blackout fabrics
- Powder coated aluminium hardware for a stylish finish
- Choice of privacy or blackout honeycomb fabrics
- Moving rail controls the adjustable blind position
- Available with co-ordinating handles
- Suitable for use on curved windows

Skysol Track Large

- Suitable for larger applications
- Dual fabric option available to combine privacy and blackout fabrics
- Powder coated aluminium hardware for a stylish finish
- Choice of privacy or blackout honeycomb fabrics
- Moving rail controls the adjustable blind position
- Available with co-ordinating handles
- Suitable for use on curved windows





Complementing the products showcased, Dometic Blinds offers a wider range of solutions designed for smaller hatches, portholes, and other standardised applications. But our expertise doesn't stop at window coverings, Dometic also provides a comprehensive portfolio of premium products crafted to elevate your onboard experience. From advanced steering systems and air conditioning to refrigeration, portable cool boxes, drinkware, and more, we deliver dependable comfort and performance—on the water and wherever your journey takes you.

To explore the full selection and discover the ideal fit for your project, visit dometic.com or contact your local Dometic Sales Representative.

dometic.com



DOMETIC BLINDS CATALOGUE



WIDER MARINE ASSORTMENT



 **DOMETIC**



DOMETIC UK BLIND SYSTEMS LTD

Atlantic House, 1-3 Ellis Square
Selsey, West Sussex PO20 0AY
Tel +44 124 360 6909
Mail blindsystems@dometric.com

DOMETIC US BLIND SYSTEMS

91 Manchester Valley Road
Building E, Vermont 05255
Tel +1 802 362 5258
Mail blindsystems@dometric.com

